



TBB Cutting Tool

M5-1 Series

銑削系列  
MILLING TOOLS SERIES

SNMU1305 / PNMU09  
(SNMU.PNMU)

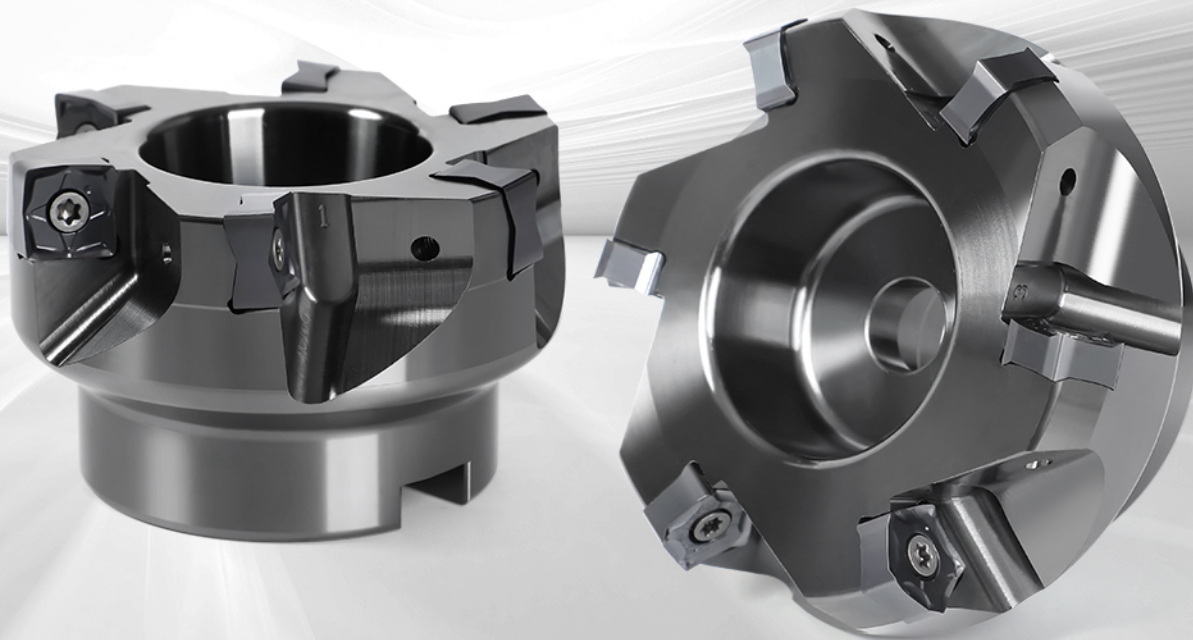
從共用加工到各類加工場景輕鬆應對

**TF88SN1305**

方肩粗加工上表現優越，接近90度的加工效果

**TF66PN09**

採用低阻力的10刃雙面刀片，保障經濟性



團隊切削 行家優選

TEAMCUTTING EXPERT PREFERRED

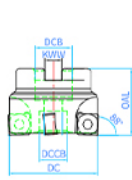
# TF88SN1305 (SNMU)

## 8刃雙面面銑刀盤

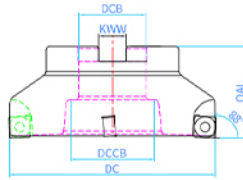
Face Mill Cutter

SNMU1305系列

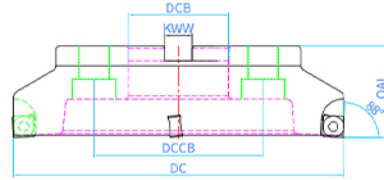
SNMU1305 Series



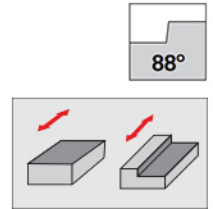
A



B



C



Designation 型號	CIC T 齒數	Dimension (mm)/尺寸							Angel 角度	INSERT 刀片
		APMX	DC	DCB	OAL	DCCB	KWW	Type		
TF88SN1305-450-22	4	5	50	22	40	17	10.4	A	88°	SNMU1305...
TF88SN1305-563-22	5	5	63	22	40	17	10.4	A	88°	SNMU1305...
TF88SN1305-680-27	6	5	80	27	50	34	12.4	A	88°	SNMU1305...
TF88SN1305-7100-32	7	5	100	32	50	42	14.4	A	88°	SNMU1305...
TF88SN1305-8125-40	8	5	125	40	55	50	16.4	B	88°	SNMU1305...
TF88SN1305-10160-40	10	5	160	40	55	80	16.4	B	88°	SNMU1305...
TF88SN1305-12200-60	12	5	200	60	55	101.6	25.8	C	88°	SNMU1305...
TF88SN1305-14250-60	14	5	250	60	55	101.6	25.8	C	88°	SNMU1305...

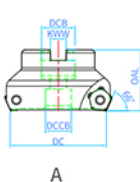
# TF66PN09 (PNMU)

## 10刃雙面面銑刀盤

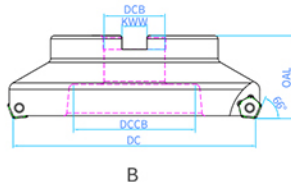
Face Mill Cutter

PNMU09系列

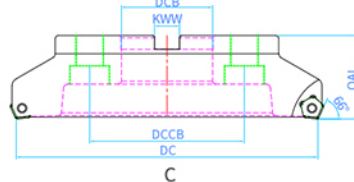
PNMU09 Series



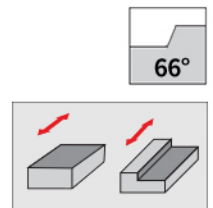
A



B



C



Designation 型號	CIC T 齒數	Dimension (mm)/尺寸							Angel 角度	INSERT 刀片
		APMX	DC	DCB	OAL	DCCB	KWW	Type		
TF66PN09-450-22	4	5	50	22	40	17	10.4	A	66°	PNMU09...
TF66PN09-563-22	5	5	63	22	40	17	10.4	A	66°	PNMU09...
TF66PN09-680-27	6	5	80	27	50	34	12.4	A	66°	PNMU09...
TF66PN09-7100-32	7	5	100	32	50	42	14.4	A	66°	PNMU09...
TF66PN09-8125-40	8	5	125	40	55	50	16.4	B	66°	PNMU09...
TF66PN09-10160-40	10	5	160	40	55	80	16.4	B	66°	PNMU09...
TF66PN09-12200-60	12	5	200	60	55	101.6	25.8	C	66°	PNMU09...
TF66PN09-14250-60	14	5	250	60	55	101.6	25.8	C	66°	PNMU09...

刀片相關資訊請參照第M5-1-02頁

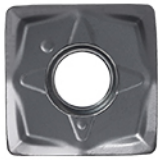
# SNMU1305 (SNMU)

## 8刃雙面銑刀片

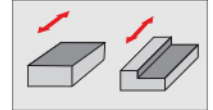
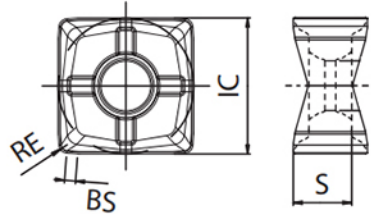
Face Mill Inserts

SNMU1305系列

SNMU1305 Series



P 銅  
M 不鏽鋼  
S 鈦、鎳



Designation 型號	Dimension (mm)/尺寸							Grade 材質	Use 用途
	IC/大小	S/厚度	RE/圓角	APMX/最大切深	BS/刀尖刃口長度	Screw/螺絲	Wrench/扳手		
SNMU130508-GM	13	5.51	0.8	5	1.0	TSA-40100-1	TWA-T15	TC3320	<span style="background-color: #0056b3; color: white; padding: 2px;">P</span>
								TC5520	<span style="background-color: #ffc000; color: white; padding: 2px;">M</span> <span style="background-color: #ff8c00; color: white; padding: 2px;">S</span>

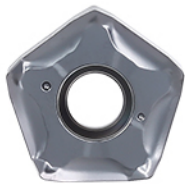
# PNMU0905 (PNMU)

## 10刃雙面銑刀片

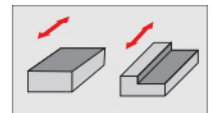
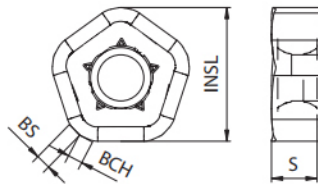
High Feed Face Mill Inserts

PNMU09系列

PNMU09 Series



P 銅  
M 不鏽鋼  
S 鈦、鎳



Designation 型號	Dimension (mm)/尺寸							Grade 材質	Use 用途
	INSL/高度	S/厚度	APMX/最大切深	BCH	BS/刀尖刃口長度	Screw/螺絲	Wrench/扳手		
PNMU0905XN-GM	17.98	6.17	5	2.0	2.0	TSA-40100-1	TWA-T15	TC3320	<span style="background-color: #0056b3; color: white; padding: 2px;">P</span>
								TC5520	<span style="background-color: #ffc000; color: white; padding: 2px;">M</span> <span style="background-color: #ff8c00; color: white; padding: 2px;">S</span>